

By 2028, a world-class Army that is a source of national pride.

PA SPECIFICATION

QM SPEC NR IC-21PAPBDU

w/ AMENDMENT 2

02 JUN 2022

Interim

NEW TABLE OF FINISHED SIZES AND MEASUREMENTS OF COAT, TROUSERS AND CAP
(MEASUREMENTS IN CENTIMETERS)

TABLE I – COAT

CODE	COAT	SMALL			MEDIUM			LARGE			XL	TOL ±	
		X-SHORT	SHORT	REG	LONG	SHORT	REG	LONG	SHORT	REG			LONG
AB	SLEEVE LENGTH, ARM SEAM TO END OF CUFF	57	59	63	67	59	63	67	59	63	67	68	1.0
CD	SHOULDER LENGTH FROM CENTER BACK TO TOP ARMHOLE SEAM	41	43	43	43	46	46	46	49	49	49	50	1.5
EF	ARMHOLE (CIRCUMFERENCE)	50.8	53.3	53.3	53.3	55.9	55.9	55.9	58.4	58.4	58.4	58.4	1.0
GH	WIDTH OF CHEST MEASURED 2.54 CM BELOW ARMPIT(CIRCUMFERENCE)	99.0	106.7	106.7	106.7	114.3	114.3	114.3	121.9	121.9	121.9	128	1.5
IJ	COLLAR CENTER POINT	49	49	49	49	52	52	52	54	54	54	54	1.0
KL	LENGTH OF COAT FROM NECK TO BOTTOM	71.1	75	77	82	75	77	82	75	77	82	86	1.0
MN	COAT CIRCUMFERENCE OF WAIST	104	108.2	108.2	108.2	116	116	116	124.5	124.5	124.5	130	1.0
OP	BOTTOM WIDTH OF COAT (CIRCUMFERENCE)	106	111	111	111	118	118	118	126	126	126	132	2.0
QR	DISTANCE OF BREAST POCKET FLAP FROM JUNCTION OF SHOULDER AND COLLAR SEAMS	22	22	22	23	22	22	23	22	22	23	23	0.5
ST	LENGTH OF BREAST POCKET FROM POCKET FLAP	19	19	19	19	19	19	19	19	19	19	19	1.0
UV	WIDTH OF SLEEVE OPENING	15	15	15	15	17	17	17	18	18	18	18	1.0

62

PA SPECIFICATION

By 2028, a world-class Army that is a source of national pride.

**QM SPEC NR IC-21PAPBDU
w/ AMENDMENT 2
02 JUN 2022**

Interim

TABLE I – COAT

CODE	COAT	SMALL				MEDIUM				LARGE				XL	TOL ±
		X-SHORT	SHORT	REG	LONG	SHORT	REG	LONG	SHORT	REG	LONG	LONG	LONG		
WX	LEFT ARM PENCIL POCKET 1: WIDTH LENGTH	3.0	3.0	3.0	3.0	3.0	3.0	3.0	3.0	3.0	3.0	3.0	3.0	0.2	
		15.5	15.5	15.5	15.5	15.5	15.5	15.5	15.5	15.5	15.5	15.5	15.5	0.5	
YZ	LEFT ARM PENCIL POCKET 2: WIDTH LENGTH	5.5	5.5	5.5	5.5	5.5	5.5	5.5	5.5	5.5	5.5	5.5	5.5	0.2	
		15.5	15.5	15.5	15.5	15.5	15.5	15.5	15.5	15.5	15.5	15.5	15.5	0.5	
AA	LENGTH BUTTONHOLE FLY FROM NECK	4	4	5	6	4	5	6	4	5	6	6	6	0.5	
BB	WIDTH OF BREAST POCKET	14	14	14	14	14	14	14	14	14	14	14	14	0.5	
CC	WIDTH OF CUFF	5	5	5	5	5	5	5	5	5	5	5	5	0.2	
DD	LENGTH OF CUFF	12	12	12	12	12	12	12	12	12	12	12	12	1.0	
EE	WIDTH OF BUTTONHOLE FLY STITCHING	4.5	4.5	4.5	4.5	4.5	4.5	4.5	4.5	4.5	4.5	4.5	4.5	0.5	
FF	LENGTH OF ADJUSTABLE BACK STRAPS	11	11	11	11	11	11	11	11	11	11	11	11	1.0	
GG	WIDTH OF ADJUSTABLE BACK STRAP	5	5	5	5	5	5	5	5	5	5	5	5	0.5	
HH	LENGTH OF BACK EXPANSION FLAP	32	32	32	32	32	32	32	32	32	32	32	32	2.0	
II	DISTANCE OF BACK EXPANSION FLAP FROM THE ARM HOLE	6	6	6	6	6	6	6	6	6	6	6	6	0.5	
JJ	WIDTH OF BACK EXPANSION FLAP	5	5	5	5	5	5	5	5	5	5	5	5	0.5	
LL	LENGTH OF SLEEVE POCKET FROM POCKET FLAP	17	17	17	17	17	17	17	17	17	17	17	17	0.5	

6a

By 2028, a world-class Army that is a source of national pride.

PA SPECIFICATION

QM SPEC NR IC-21PAPBDU
w/ AMENDMENT 2

02 JUN 2022
Interim

TABLE I - COAT

CODE	COAT	SMALL			MEDIUM			LARGE			XL	TOL ±
		X-SHORT	SHORT	REG	LONG	SHORT	REG	LONG	SHORT	REG		
MM	WIDTH OF SLEEVE POCKET	14	14	14	14	14	14	14	14	14	14	0.5
NN	LENGTH OF SLEEVE PADDING	24	24	24	24	24	24	24	24	24	24	1.0
PP	WIDTH OF SLEEVE PADDING	21.5	21.5	21.5	21.5	22.5	22.5	22.5	23.5	23.5	23.5	1.0

TABLE II - TROUSERS

CODE	TROUSERS	SMALL			MEDIUM			LARGE			XL	TOL ±	
		X-SHORT	SHORT	REG	LONG	SHORT	REG	LONG	SHORT	REG			LONG
AB	WAIST CIRCUMFERENCE	78.7	86.3	86.3	86.3	93.9	93.9	93.9	104.1	104.1	104.1	111.7	2.0
CD	WAISTBAND TO CROTCH	28	30.5	30.5	30.5	30.5	30.5	30.5	30.5	30.5	30.5	31.7	1.0
EF	LENGTH OF OUTSEAM	94	102	107	112	102	107	112	102	107	112	112	1.0
GH	LENGTH OF INSEAM	66	71.5	76.5	81.5	71.5	76.5	81.5	71.5	76.5	81.5	81.5	1.5
IJ	BOTTOM HEM	2.5	2.5	2.5	2.5	2.5	2.5	2.5	2.5	2.5	2.5	2.5	0.2
KL	HIP CIRCUMFERENCE	96.4	104.2	104.2	104.2	111.8	111.8	111.8	122	122	122	122	1.5
MN	THIGH CIRCUMFERENCE	66	66	66	66	70	70	70	74	74	74	78.7	1.5
OP	CIRCUMFERENCE OF KNEE	50	50	50	50	54	54	54	57	57	57	59	1.5
QR	BOTTOM CIRCUMFERENCE	40	40	40	40	42	42	42	44	44	44	45	1.0
ST	SIDE POCKET OPENING	16.5	16.5	16.5	16.5	16.5	16.5	16.5	16.5	16.5	16.5	16.5	0.5
UV	LENGTH OF THIGH POCKET FROM POCKET FLAP	21.0	21.0	21.0	21.0	21.0	21.0	21.0	21.0	21.0	21.0	21.0	1.0

6a

8

PA SPECIFICATION

By 2028, a world-class Army that is a source of national pride.

**QM SPEC NR IC-21PAPBDU
w/ AMENDMENT 2**

02 JUN 2022

Interim

TABLE II - TROUSERS

CODE	TROUSERS	SMALL			MEDIUM			LARGE			XL	TOL ±
		X-SHORT	SHORT	REG	LONG	SHORT	REG	LONG	SHORT	REG		
WX	WIDTH OF THIGH POCKET	18	18	18	18	18	18	18	18	18	18	1.0
YZ	LENGTH OF LOWER POCKET FROM POCKET FLAP	16.5	16.5	16.5	16.5	16.5	16.5	16.5	16.5	16.5	16.5	0.5
	WIDTH OF LOWER POCKET	10.5	10.5	10.5	10.5	10.5	10.5	10.5	10.5	10.5	10.5	0.5
BB	WIDTH OF WAISTBAND	4.5	4.5	4.5	4.5	4.5	4.5	4.5	4.5	4.5	4.5	0.3
CC	WIDTH OF LEFT FLY	4.5	4.5	4.5	4.5	4.5	4.5	4.5	4.5	4.5	4.5	0.5
DD	LENGTH OF KNEE PADDING	25	25	26	27	25	26	27	25	26	27	0.5
EE	WIDTH OF BUTTOCK PADDING FROM CROTCH TO INSEAM	13	14	14	14	15	15	15	16	16	16	0.5
FF	LENGTH OF BUTTOCK PADDING FROM UPPER EDGE TO CROTCH	25	26	26	26	27	27	27	28	28	28	0.5

TABLE III - BALL CAP

CODE	SIZES	54	55	56	57	58	59	60	TOLERANCE ±
		A	TOP HOOD (CIRCUMFERENCE)	54	55	56	57	58	
B	WRAP AROUND HEADBAND TO INCLUDE HEADBAND PIPING: HEIGHT - BACK - FRONT	8.0	8.0	8.0	8.0	8.0	8.0	8.0	0.2
		5.8	5.8	5.8	5.8	5.8	5.8	5.8	0.2
C	WIDTH OF HEADBAND PIPING	2.5	2.5	2.5	2.5	2.5	2.5	2.5	0.2
D	LENGTH OF VISOR	6.5	6.5	6.5	6.5	6.5	6.5	6.5	0.2
E	WIDTH OF VISOR	17.5	17.5	17.5	17.5	17.5	17.5	17.5	0.5

62

PA SPECIFICATION

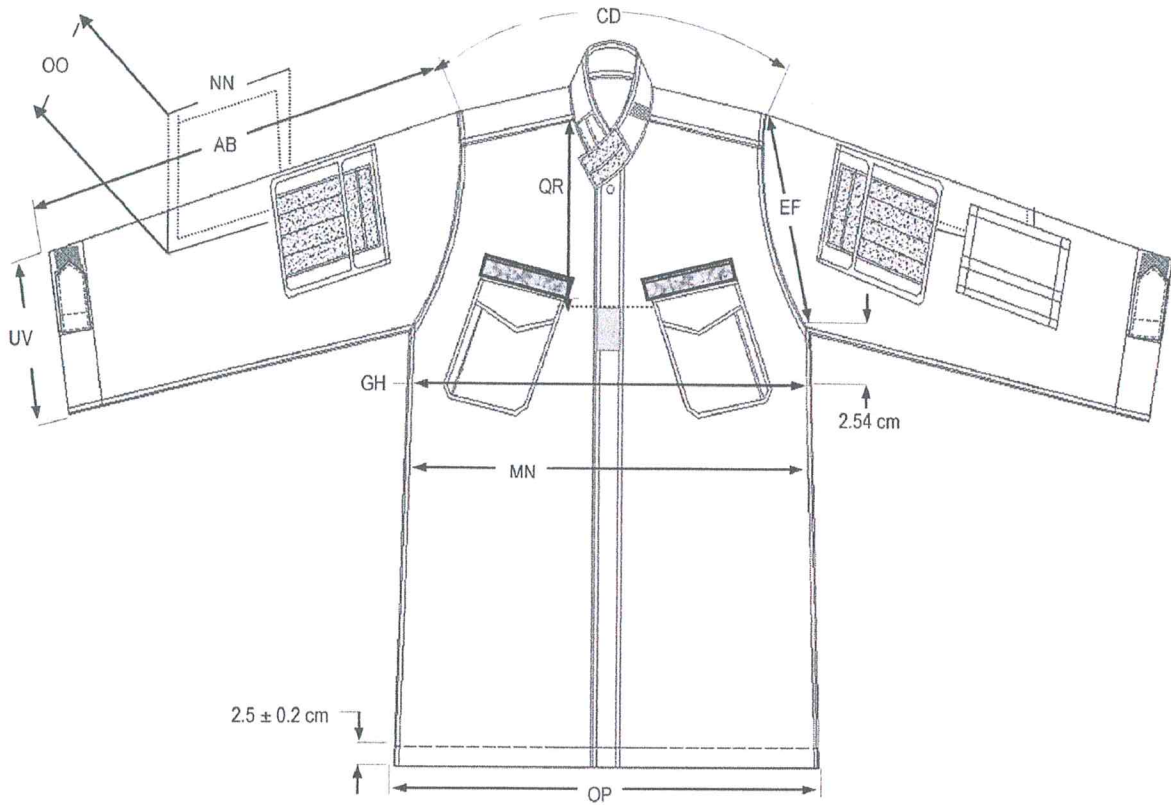
QM SPEC NR IC-21PAPBDU
w/ AMENDMENT 2

02 JUN 2022

Interim

PHILIPPINE ARMY PATTERN (PHILARPAT)
BATTLE DRESS UNIFORM (BDU)

COAT



FRONT VIEW

600

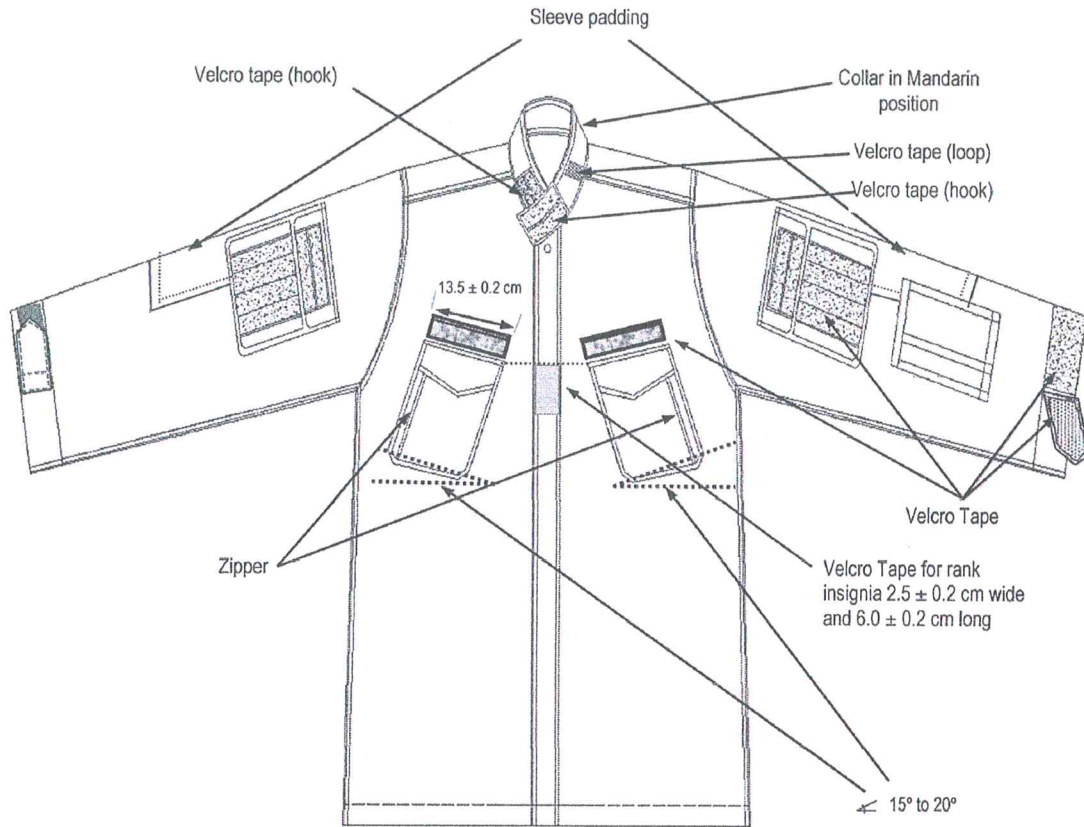
PA SPECIFICATION

QM SPEC NR IC-21PAPBDU
 w/ AMENDMENT 2

02 JUN 2022

Interim

COAT



PA LOGO

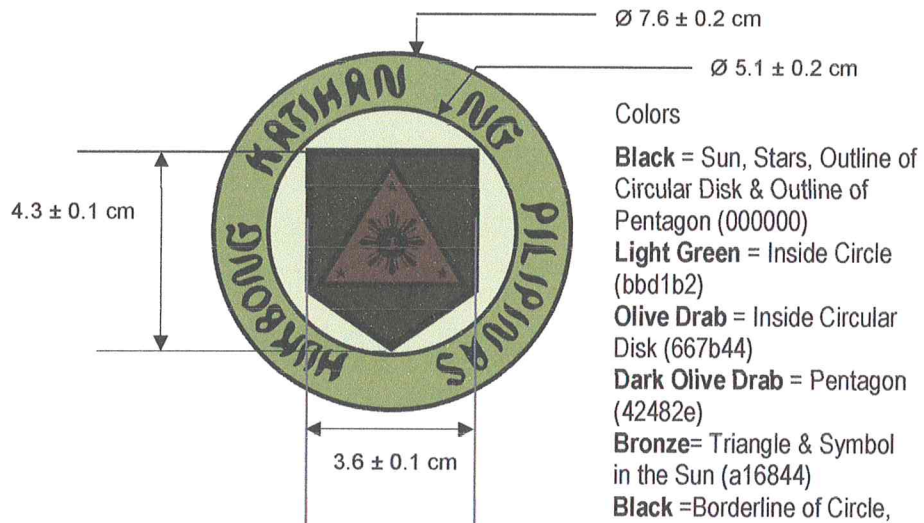


FIGURE 3